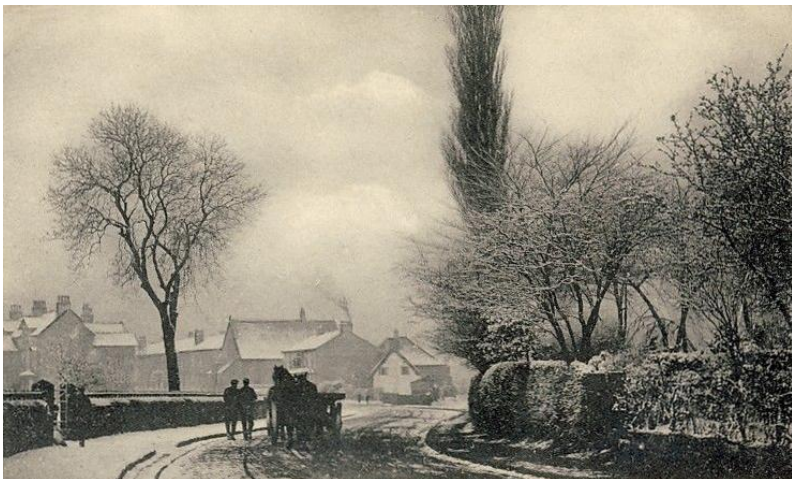


## ALTRINCHAM HISTORY SOCIETY

NEWSLETTER No. 18 December 2021

Hazel Pryor  
11 Thorley Lane,  
Timperley  
Altrincham  
WA15 7BJ



Hello everyone,

Christmas Greetings, and best wishes for the year ahead, and hoping it will be a better year for us all.

For those of you who came to the December meeting, I hope you enjoyed it and that the quizzes weren't too hard. For all of you, I've attached a different Photo Quiz, just to keep you occupied.

Here's one from a snowy Timperley.

If you want something to do over Christmas, we need help with the Local Heritage Listing Project, we have only until the end of December to add more buildings, structures, parks etc. to the list for Trafford. There are currently 490 'assets' added across Trafford. There are plenty more suitable candidates, but we now have very little time to get them on the list. If you want to help, let me know, I can advise about the website.

Here are the usual selection of things that may be of interest. Recently spotted these two programmes:

On YouTube: Dan Snow on 'Henry VIII's Coastal Fortress Hurst Castle' 19 minutes video. on 4 coastal castles, on 'History Hit' YouTube channel.

An old episode of Time Team on the Grey Family at Groby Old Hall - Time Team Season 18 Episode 7. 'The House of the White Queen, Groby, Leicestershire.'

-----

Manchester and Salford: Five Trivial Historic Relics. This is a 40 minute video on YouTube, posted by Martin Zero on 5<sup>th</sup> December. He visits sites where there are little bits of structures still left, then uses maps and old photos to explain their origins. It includes sites in Openshaw, Angel Meadow, Kersal Vale and Kearsley. I found it very interesting, and will put Kersal Vale on my 'visit it sometime' list. He has done other videos including 'The Lost Rivers of Manchester'.

-----

### Charles Tunnicliffe Anniversary

'Inspired by Nature' celebrates what would have been the 120<sup>th</sup> birthday year of Charles Tunnicliffe, renowned wildlife artist born in Langley, near Macclesfield. From early December to Spring 2022, a range of events across the town and online will showcase his artwork. Details of all the events can be found online at [https://macclesfieldmuseums.co.uk/tunnicliffe120?utm\\_medium=email&utm\\_source=govdelivery](https://macclesfieldmuseums.co.uk/tunnicliffe120?utm_medium=email&utm_source=govdelivery) [I remember holidays on Anglesey at Malltraeth where Tunnicliffe had a house, just across the field from where Gran lived, and have still got his books Shorelands Summer Diary and Shorelands Winter Diary.]

-----

**Will you join the queue? 1921 Census** will be available on Findmypast from 6<sup>th</sup> January 2022.

The National Archives announce 2 regional hubs that will provide **free** online access. As well as at Kew, and the National Library of Wales, Aberystwyth, there is a hub at Manchester Central library.

The National Archives latest news - including 60 years since the birth control pill, and some 'festive' films.  
[https://clicks.econnectmail.com/view\\_online/view\\_online.php?token2=hGJHeY3rr8VpimMn1NDtPcL\\_SqMG0ZjmX0HUSNWgvs\\_t09AKmEWK9h78kdeYka\\_62EgGhrkhWNXjIcFnge2KQ](https://clicks.econnectmail.com/view_online/view_online.php?token2=hGJHeY3rr8VpimMn1NDtPcL_SqMG0ZjmX0HUSNWgvs_t09AKmEWK9h78kdeYka_62EgGhrkhWNXjIcFnge2KQ).

---

Here's a bit of a puzzler for you.

Can you work out these Welsh birthplaces from the 1881 Census. They've suffered the double mangling of Cheshire Census enumerators and Mormon transcribers. You need a bit of knowledge of places in Wales.

Dolgalla	Brin Mawar	Aberystwith	Rhosllinfuffl
Carry Y Durdon	Michakltwy	Dalgelly	Moulding
Abberysthust	Caerloon	Divis Maudy	and best of all
Hamlic	Podfarrie	Then there's:	Camphoongbula
Dolgetly	Mychnelleth	Brynddengumns	

Suggestions at the end.

---

### Archaeology

The Dig Greater Manchester blog site provides free online access to various archaeological resources. These include the first 27 of the 'GM Past Revealed' booklet series, including the recently published 'Salford Regeneration' volume. Over 60 archaeology/heritage information panels were put on the site as well, with examples from all over Greater Manchester. These have derived from either grant-aided community projects or developer funding secured by planning conditions. Three online lectures were also put online along with several podcasts. The content can be found at: <https://diggreatermanchester.wordpress.com>

Melandra Roman Fort - have a look on Facebook page <https://www.facebook.com/GlossopHeritage/> for a series of short articles entitled "Melandra – Glossop's Forgotten Fort."

### South Trafford Archaeology Group

The STAG website <https://stagarchaeologymanchester.wordpress.com> has been upgraded throughout 2020 and 2021. It has a dedicated page for back issues of the 'Browsings' newsletter and a page for digital copies of STAG project reports, which includes early archaeology excavation and survey reports from the 1980s and 1990s, such as the Victoria Street Dig in 1980 and 1983 and a building survey of The Griffin, Bowdon.

---

Cheshire Archives & Local Studies has a new blog - Planes, Trains and Automobiles about transport and early vehicles in Cheshire, for images of pioneering aviators, earliest cars, outings in charabancs and more.  
<http://cheshireo.blogspot.com/2021/12/planes-trains-and-automobiles.html>

---

Trafford Local Studies - are continuing to catalogue and digitise the fantastic collection of photographs. You can read about the project and see December's highlights here (which include some lovely ones from Altrincham and Urmston) and catch up on previous months.

[https://exploringtraffordsheritage.omeka.net/exhibits/show/digitising-the-tpc/december?fbclid=IwAR3Bx-5LJc\\_gNtB7pbzTJoHn81q2iU2LwKdtFprk64qv9hWLIJM8MQt3mEo](https://exploringtraffordsheritage.omeka.net/exhibits/show/digitising-the-tpc/december?fbclid=IwAR3Bx-5LJc_gNtB7pbzTJoHn81q2iU2LwKdtFprk64qv9hWLIJM8MQt3mEo)

---

**Talking Pictures TV** If, like me, you have found very little worth watching on the main TV channels and discovered Talking Pictures TV (Freeview channel 81), there is now a website where you can catch up on old films and TV series, from William Tell, and Secret Army to lost episodes of No Hiding Place and Alistair Simm in Scrooge. The short information films are good as well. Have a look at [tptvencore.co.uk](http://tptvencore.co.uk)

---

Best wishes, keep warm, and I hope to see you in the new year. *Hazel*

Answers to 1881 Welsh place names:

Dolgellau	Bryn Mawr	Aberystwyth
Cerrig-y-drudion	Machynlleth	Dolgellau
Aberystwyth ( maybe)	Caerleon	Dinas Mawddwy
Amlwch	Bodfari	
Dolgellau	Machynlleth	Have fun with the rest, I have no idea!

Timperley snowy scene is Stockport Road with the current Methodist Church on the right and looking towards Grove Lane.